



宝勋精密螺丝浙江有限公司
POL SHIN FASTENER (ZHEJIANG) CO., LTD.

宝勋精密螺丝浙江有限公司
POL SHIN FASTENER (ZHEJIANG) CO., LTD.

浙江省嘉善经济开发区成功路77号 邮编/PC.:314100
No.77, Chenggong Rd. E.D.Z., Jiashan Zhejiang Province, China
电话/Tel:(86-573)84182071~84182076 传真/Fax:(86-573)84182077 84182078
<http://www.polshin.com> E-mail:polshin@163.com info@polshin.cn



POL SHIN

领导致辞

Speech by the director

本公司素以“顾客至上，质量为先”为宗旨。以卓越的技术和更好的服务，满足客户的需求为目标。面对新世纪带来的重重挑战，宝勋公司将全力开拓海内外市场，不断加强技术水平；员工素质和管理手段，强化品牌意识。目前公司已顺利通过了TS16949:2002/ISO9001:2000质量管理体系认证。

我公司向您真诚承诺，为您提供优质与满意的服务，我们将竭尽全力开始始终如一地关注你们提供的宝贵意见与建议做得更好。在此，我们愿与您同心协力，共创辉煌明天。

"Customers are superior while quality goes first" has always been the principle of our company. Our efforts are made to meet the customers' demands with our outstanding technology and constantly improved service. Facing the various challenges coming along with the new century, Pol Shin is trying all means to increase the share in the overseas market, increasingly upgrade the technology, invest more in educating the employees, improve the management methods and keep the brand value. The Company has been successfully certified by TS16949:2002/ISO9001:2000.

We whole-heartedly promise you with our high quality and satisfactory service, and we will put high value on your opinions and suggestions, and try all we can to improve ourselves. Here we'd like to express our willingness to work together with you for a splendid future of ours together.



POL SHIN

诚信务实 / 规范进取 / 崇尚科技 / 稳健发展
SINCERITY / STANDARIZATION / SCIENTISM / STABILITY



POL SHIN

打造世界一流精密螺丝生产制造企业

Create a first-rate manufacturing enterprise of fine screws

宝助精密螺丝(浙江)有限公司是一家专业生产销售建筑五金件、汽车高强度精密紧固件企业。主要产品有：钻尾螺丝、攻牙螺丝、干壁螺丝、纤维板螺丝和汽车螺丝等高品质螺丝。目前公司占地面积120亩，拥有各种先进的生产设备，技术力量雄厚，具有专业的设计、开发、生产、管理及完善的检测能力，生产产品规格自M2.2-M10.0，长度5mm-400mm，年生产量达30000吨。

面对中国加入WTO后带来的激烈竞争，公司全面导入ISO认证和严格科学的管理，于2004年七月通过了ISO9001:2000认证，于2005年十二月完成ISO/TS16949:2002质量体系认证。经公司不懈努力和严格、科学的管理，凭优良的品质和热情的服务，赢得客户的好评。

POL SHIN FASTENER (ZHEJIANG) CO.,LTD is a professional manufacturer and trader of construction hardwares, high-grade automobile fine fasteners. The main products are of high quality screws such as SELF DRILLING screws, TAPPING screws, DRYWALL screws, CHIPBOARD screws and automobile screws, etc. The Company covers at present an area of 80,000 m², owns various advanced manufacturing equipments and a strong team of technicians that responds for designing, development, production, management and quality control. Our products' specification ranges from M2.2 to M10 in diameters, and 5mm to 400mm in length. The annual output is 30,000 m/t.

In order to deal with the increasingly harder market competition after China becoming a member of WTO, the Company has fully introduced ISO standards and make our way of management more scientific. As a result we successfully passed ISO9001:2000 and TS16949 in July of 2004 and December of 2005 respectively. Our great efforts have won a high evaluation from the customers for the proper management, strict quality control and good service.



1 盘元 → 2 粗抽 → 3 球化 → 4 酸洗 → 5 精抽 → 6 打头 → 7 夹尾 → 8 辗牙 → 9 热处理 → 10 表面处理 → 11 包装



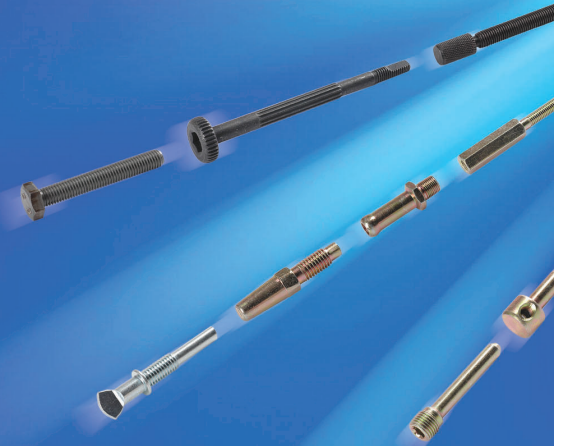
POL SHIN

先进的自动化设备 完美雕琢每个细节
Advanced automatic equipments / Compromise with no single detail

POL SHIN

品种丰富 / 规格齐全 / 可满足您的不同需求

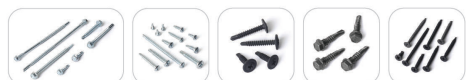
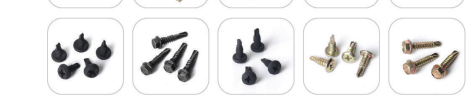
Various products / Full range of specifications / Meet your demands of all kinds





钻尾螺丝
SELF DRILLING SCREW

POL SHIN



POL SHIN

攻牙螺丝
TAPPING SCREW



特殊螺丝
SPECIAL SCREW
POL SHIN



POL SHIN

纤维板螺丝
CHIPBOARD SCREW



POL SHIN

水泥螺丝
WINDOWS FRAME SCREW



POL SHIN



POL SHIN

干壁螺丝
DRYWALL SCREW



POL SHIN

长螺丝
LONG SCREW

POL SHIN

链带螺丝
COLLATED SCREW

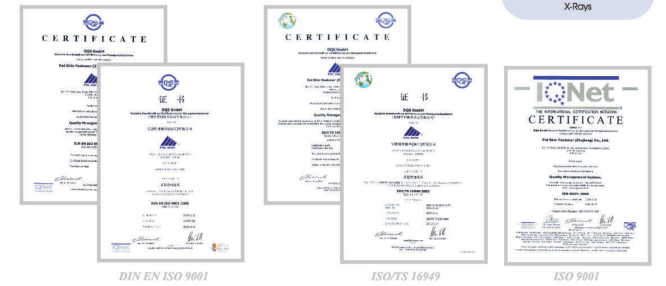




完善的品保系统 / 保证每个螺丝的优良品质
 Improve the quality control system
 To ensure excellent quality for every single screw

POL SHIN

先进的检验设备 / 完善的检验系统 / 让每个产品在出厂前都保持着最完美的品质
 Advanced testing equipments / Improved testing system / To ensure every product of perfect quality before being shipped.



DIN EN ISO 9001

ISO/TS 16949

ISO 9001

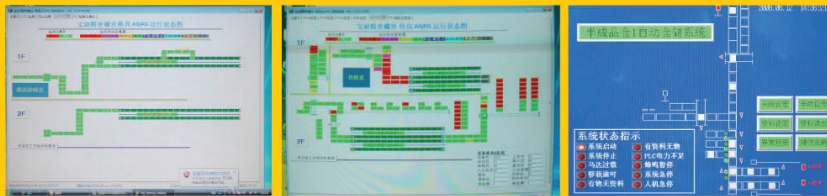


8,000吨 自动化仓储
Auto-operated warehouse of 8,000 m³.

POL SHIN

强大的仓储能力 / 自动化的管理 / 在最短的时间里为客户提供最优最全的产品

Spacious warehousing / High auto-operating capability / Supply customers with our best products of the largest range of specifications in the shortest delivery time.





POL SHIN

领先的环保理念 / 卓越的环保设施

Up-to-date sense of care about environment

Advanced environmental protecting equipments





DIN EN ISO9001

ISO/TS 16949

ISO 9001



精磨



打头

热处理

磨牙

表面处理

包装

宝助精密螺丝浙江有限公司

浙江省嘉兴经济开发区成达路77号 邮编 314100
 电话:(0573)84182071-84182076 传真:(0573)84182077 84182078
<http://www.polshin.com> E-mail:polshin@163.com info@polshin.cn



POL SHIN

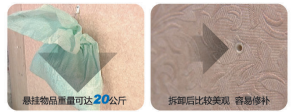
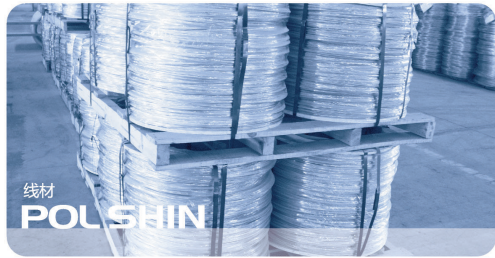
打造世界一流精密螺丝生产制造企业

宝助精密螺丝(浙江)有限公司是一家专业生产销售建筑五金件、汽车高温紧固件企业。主要产品有：钻尾螺丝、攻牙螺丝、干壁螺丝、纤维板螺丝和汽车螺丝等高品质螺丝。目前公司占地面积1220亩，拥有各种先进的生产设备，技术力量雄厚，具有专业的设计、开发、生产、管理及完善的检测能力，生产产品规格自M2-M10.0，长度5mm-400mm，年产量达30000吨。面对中国加入WTO后带来的激烈竞争，公司全面导入JISO认证和严格科学的管理，于2004年七月通过了ISO9001:2000认证。于2005年十二月完成ISO/TS16949:2002质量管理体系认证。经公司不懈努力和严格、科学的管理，凭优良的品质和热情的服务，赢得客户的好评。



先进的自动化设备 完美雕琢每个细节

- 1-盘元 → 2-粗抽 → 3-球化 → 4-酸洗 → 5-精抽 → 6-打头 → 7-夹尾 →
 8-磨牙 → 9-热处理 → 10-表面处理 → 11-包装



专利申请号	
美国	11/520,360
台湾	95215655
中国	200620136658.6
日本	特愿2007-206336
欧洲	07006353.9